



FITTING INSTRUCTIONS FOR EH0089BK EXHAUST HANGER
HUSQVARNA VITPILEN 701 2018-

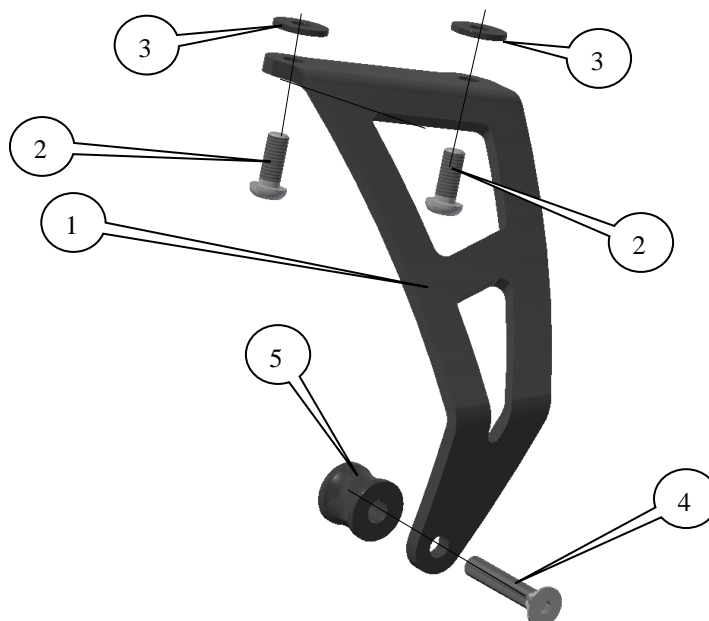


HIS KIT CONTAINS THE ITEMS PICTURED AND LABELLED BELOW.
DO NOT PROCEED UNTIL YOU ARE SURE ALL PARTS ARE PRESENT.

Please note that the way the kit is packed does not necessarily represent the way of mounting to the bike.

Please note that in cases where kits are packed with rubber O rings holding the components onto the bolt – *the rubber O rings should be thrown away!*

THE PARTS SHOWN MAY BE REPRESENTATIVE ONLY (FOR CLARITY OF INSTRUCTIONS ONLY)





LEGEND

- ITEM 1 = EXHAUST HANGER (HB0089) (x1).
 ITEM 2 = M8 x 20mm LONG BUTTON HEAD BOLT (x2).
 ITEM 3 = M8 RUBBER WASHERS (RW003) (x2).
 ITEM 4 = M8 x 45mm LONG COUNTER-SUNK BOLT (x1).
 ITEM 5 = SPACER 21.5mm LONG (S1154) (x1).

TOOLS REQUIRED

- Set of metric Allen keys to include 4, 5 & 6mm A/F sizes.
- Socket set to include 10, 12 & 13mm Sockets.

Please note that in cases where kits are packed with rubber O rings holding the components onto the bolt – *the rubber O rings should be thrown away!*

Digital copies of these instructions are available to download from www.rg-racing.com

GENERAL TORQUE SETTINGS

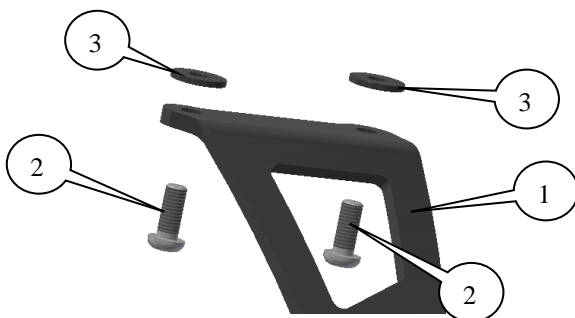
- M4 BOLT = 8Nm
 M5 BOLT = 12Nm
 M6 BOLT = 15Nm
 M8 BOLT = 20Nm
 M10 BOLT = 40Nm



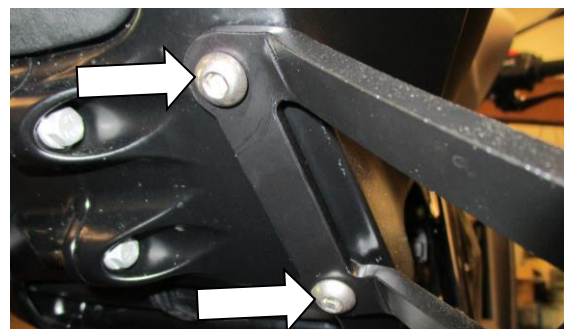
PICTURE 1



PICTURE 2



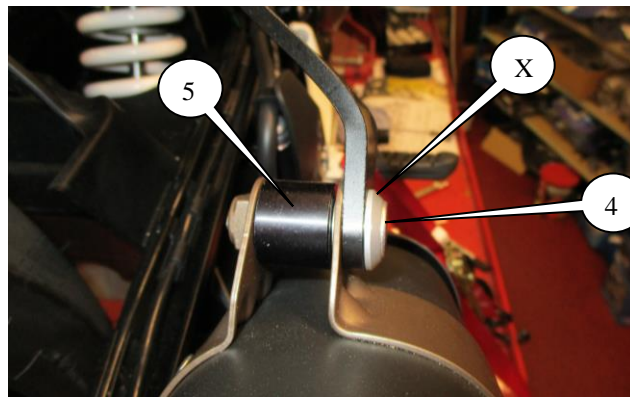
PICTURE 3



PICTURE 4

R&G

Unit 1, Shelley's Lane, East Worldham, Alton, Hampshire, GU34 3AQ
 Tel: +44 (0)1420 89007 Fax: +44 (0)1420 87301 www.rg-racing.com Email: info@rg-racing.com



PICTURE 5

FITTING INSTRUCTIONS

- To fit the R&G Exhaust Hanger, the OEM pillion footrest mounting bracket needs to be removed.
- To do this, remove the two mounting bolts at the top of the pillion footrest mounting bracket as arrowed in picture 1.
- Remove the exhaust mounting bolt (arrowed in picture 2) and then remove the OEM pillion footrest mount from the bike.
- Place the two M8 button head bolts (item 2) through the new exhaust hanger bracket (item 1) as shown in picture 3, then place the rubber washers (item 3) onto the exposed threads as shown in picture 3.
- Offer this assembly into position and secure in place as shown in picture 4.
- Place the M8 counter-sunk bolt (item 4) through the original spacer (marked X), then through the new exhaust bracket (item 1), then through the original exhaust bracket and new spacer (item 5) as shown in picture 5.
- Ensure the exhaust hanger is correctly fitted before tightening all bolts.
- Please ensure when the motorcycle is being used that no parts are in such a position that they may collide/damage other bike parts (this is particularly important if using after-market cans or exhaust systems).

Please note that it is your responsibility to ensure that no part of the exhaust hanger or exhaust assembly fouls or comes into contact with other parts of the machine. Do not ride the motorcycle until this aspect has been verified and you have compressed the rear suspension (if appropriate to the design of the motorcycle) to test this thoroughly.

ISSUE 1 13/11/2018 (NSY)

CONSUMER NOTICE

The catalogue description and any exhibition of samples are only broad indications of the Products and R&G may make design changes which do not diminish their performance or visual appeal and supplying them in such state shall conform to the order. The Buyer acknowledges no representation or warranty (other than as to title) has been given or will apply to the Products other than those in R&G's order or confirmation and the Buyer confirms it has chosen the Products as being of merchantable quality and suitable for its particular purposes. Where R&G fits the Products or undertakes other services it shall exercise reasonable skill and care and rectify any fault free of charge unless the workmanship has been disturbed. The Buyer is responsible for ensuring that the warranty on the motorcycle is not affected by the fitting of the Products. On return of any defective Products R&G shall at its option either supply a replacement or refund the purchase money but shall not be liable if the Products have been modified or used or maintained otherwise than in accordance with R&G's or manufacturer's instructions and good engineering practice or if the defect arises from accident or neglect. Other than identified above and subject to R&G not limiting its liability for causing death and personal injury, it shall not be liable for indirect or consequential loss and otherwise its liability shall be limited to the amounts paid by the Buyer for the Products or the fitting or service concerned. These terms do not affect the Buyer's statutory rights.

R&G RACING RETURNS POLICY (NON-FAULTY GOODS)

Returns must be pre-authorized (if not pre-authorized the return will be rejected). Goods may only be returned direct to us if they were purchased direct from us (customer must prove if necessary). Otherwise to be returned to original vendor. Goods must be in re-sellable condition, in the opinion of R&G Racing. All returns are subject to a 25% restocking and handling fee (25% of the gross value exc. P&P – at the prevailing price at time of purchase). The customer must pay any and all carriage charges. No returns of discontinued products, unless within 14 days of purchase. This policy does not affect your statutory rights and does not refer to faulty goods.

R&G

Unit 1, Shelley's Lane, East Worldham, Alton, Hampshire, GU34 3AQ

Tel: +44 (0)1420 89007 Fax: +44 (0)1420 87301 www.rg-racing.com Email: info@rg-racing.com



**NOTICE DE MONTAGE POUR EH0089BK SUPPORT POT
D'ÉCHAPPEMENT
HUSQVARNA VITPILEN 701 2018-**

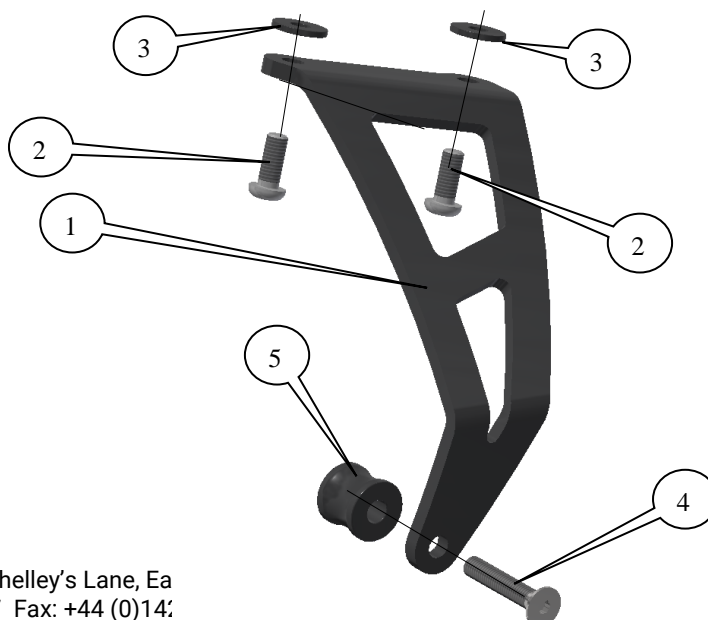


Le kit contient les articles exposés ci-dessous, vérifier que toutes les pièces soient présentes avant de procéder au montage.

La façon dont le kit est emballé ne correspond pas forcément à la façon de monter les pièces sur la moto.

Notez que si les kits sont emballés avec des rondelles en caoutchouc servant à tenir les composants, ces rondelles doivent être jetées !

LES PARTIES PRESENTEES PEUVENT ETRE UNIQUEMENT REPRESENTATIVES (POUR LA CLARTE DES INSTRUCTIONS UNIQUEMENT).





LÉGENDE

- ARTICLE 1 = SUPPORT D'ÉCHAPPEMENT (HB0089) (x1).
 ARTICLE 2 = M8 x 20mm BOULON (x2).
 ARTICLE 3 = M8 RONDELLES EN CAOUTCHOUC (RW003) (x2).
 ARTICLE 4 = M8 x 45mm BOULON (x1).
 ARTICLE 5 = ENTRETOISE 21.5mm DE LONG (S1154) (x1).

OUTILS REQUIS

- Clés Allen 4, 5 & 6mm.
- Clés à cliquet + douilles 10, 12 & 13mm.

Notez que si les kits sont emballés avec des rondelles en caoutchouc servant à tenir les composants, *ces rondelles doivent être jetées !*

Notice disponible au téléchargement sur www.rg-racing.com

VALEURS DE SERRAGE RECOMMANDEES

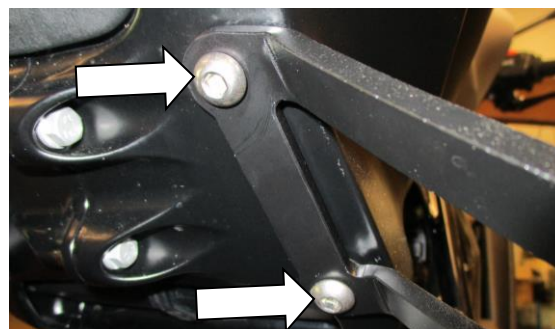
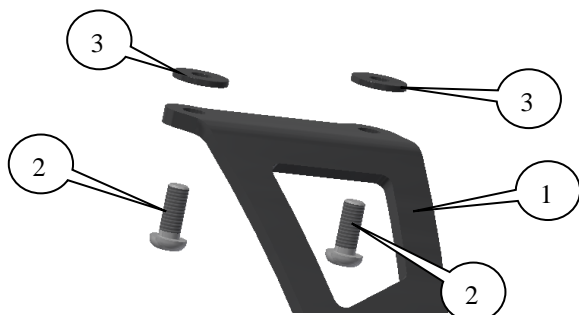
- M4 BOULON = 8Nm
 M5 BOULON = 12Nm
 M6 BOULON = 15Nm
 M8 BOULON = 20Nm
 M10 BOULON = 40Nm



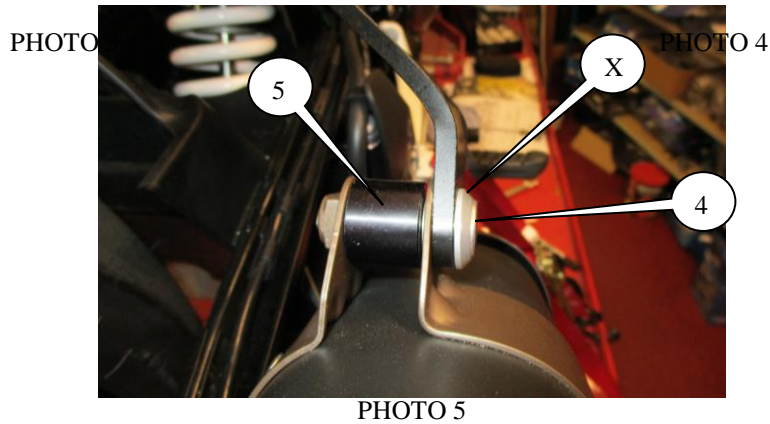
PHOTO 1



PHOTO 2



R&G



NOTICE DE MONTAGE

- Pour monter le support d'échappement R&G, le support de fixation du repose pied passager d'origine doit être enlevé.
- Pour cela, enlever les 2 boulons de fixation sur le haut du support de fixation du repose pied passage, voir photo 1.
- Enlever le boulon de fixation d'échappement (voir photo 2) puis enlever le support de repose pied passage d'origine de la moto.
- Placer les 2 boulons M8 (article 2) dans le nouveau support d'échappement (article 1) voir photo 3, puis placer les rondelles (article 3) sur les extrémités de filetage, voir photo 3.
- Monter l'ensemble en position puis fixer la position, voir photo 4.
- Placer le boulon M8 (article 4) dans l'entretoise d'origine (marquée X), puis dans le nouveau support d'échappement (article 1), puis dans le support d'échappement d'origine et la nouvelle entretoise (article 5) voir photo 5.
- Veiller à ce que le support d'échappement soit correctement monté avant de serrer tous les boulons.
- Veiller à ce qu'aucune partie de la moto ne puisse heurter d'autres parties de la moto lors de l'usage de la moto. (Cela est particulièrement important si le pot d'échappement n'est pas d'origine).

Il est de votre responsabilité de veiller à ce qu'aucune partie du support de pot d'échappement ne puisse entrer en contact avec d'autres parties de la moto. Ne pas utiliser la moto tant que ce point n'a pas été vérifié, en ayant compressé l'amortisseur arrière (si le design de la moto le permet).

ISSUE 1 13/11/2018 (NSY)

CONSUMER NOTICE

The catalogue description and any exhibition of samples are only broad indications of the Products and R&G may make design changes which do not diminish their performance or visual appeal and supplying them in such state shall conform to the order. The Buyer acknowledges no representation or warranty (other than as to title) has been given or will apply to the Products other than those in R&G's order or confirmation and the Buyer confirms it has chosen the Products as being of merchantable quality and suitable for its particular purposes. Where R&G fits the Products or undertakes other services it shall exercise reasonable skill and care and rectify any fault free of charge unless the workmanship has been disturbed. The Buyer is responsible for ensuring that the warranty on the motorcycle is not affected by the fitting of the Products. On return of any defective Products R&G shall at its option either supply a replacement or refund the purchase money but shall not be liable if the Products have been modified or used or maintained otherwise than in accordance with R&G's or manufacturer's instructions and good engineering practice or if the defect arises from accident or neglect. Other than identified above and subject to R&G not limiting its liability for causing death and personal injury, it shall not be liable for indirect or consequential loss and otherwise its liability shall be limited to the amounts paid by the Buyer for the Products or the fitting or service concerned. These terms do not affect the Buyer's statutory rights.

R&G RACING RETURNS POLICY (NON-FAULTY GOODS)

Returns must be pre-authorized (if not pre-authorized the return will be rejected). Goods may only be returned direct to us if they were purchased direct from us (customer must prove if necessary). Otherwise to be returned to original vendor. Goods must be in re-sellable condition, in the opinion of R&G Racing. All returns are subject to a 25% restocking and handling fee (25% of the gross value exc. P&P – at the prevailing price at time of purchase). The customer must pay any and all carriage charges. No returns of discontinued products, unless within 14 days of purchase. This policy does not affect your statutory rights and does not refer to faulty goods.

R&G

Unit 1, Shelley's Lane, East Worldham, Alton, Hampshire, GU34 3AQ

Tel: +44 (0)1420 89007 Fax: +44 (0)1420 87301 www.rg-racing.com Email: info@rg-racing.com



**MONTAGEANLEITUNG FÜR EH0089BK AUSPUFFHALTERUNG
HUSQVARNA VITPILEN 701 2018-**

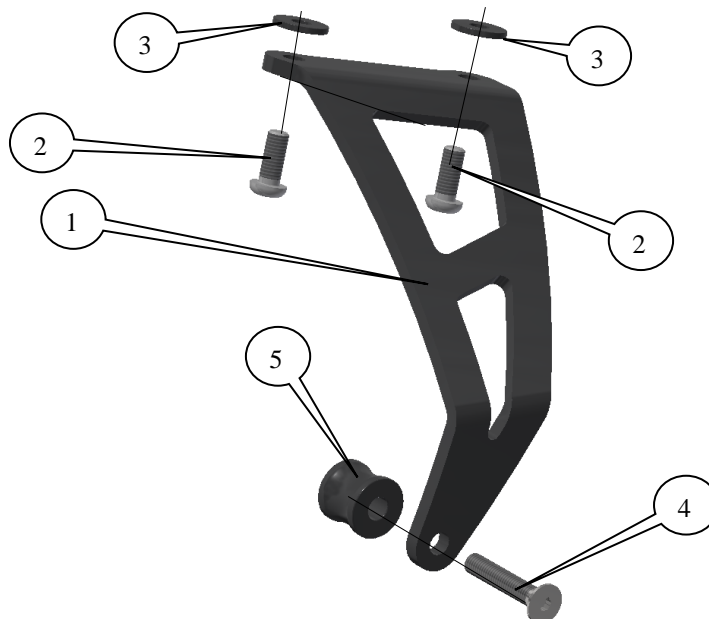


ALLE KIT-TEILE SIND UNTEN ABGEBILDET UND GEKENNZEICHNET. BEVOR SIE MIT DER MONTAGE BEGINNEN, ÜBERPRÜFEN SIE, DASS ALLE TEILE VORHANDEN SIND.

HINWEIS: DIE VERPACKUNG DER TEILE STELLT NICHT DIE REIHENFOLGE DER MONTAGE DAR.

Hinweis für Kits mit O-Gummiringen an den Schrauben – *Diese O-Gummiringen werden nicht für den Einbau benötigt!*

DIE UNTEN ABGEBILDETEN TEILE DIENEN LEDIGLICH ZUR ERKLÄRUNG



R&G



LIEFERUMFANG

- ARTIKEL 1 = AUSPUFFHALTERUNG (HB0089) (x1)
- ARTIKEL 2 = M8 x 20mm INBUSSCHRAUBE (x2)
- ARTIKEL 3 = M8 GUMMI UNTERLEGSSCHEIBE (RW003) (x2)
- ARTIKEL 4 = M8 x 45mm SENKSCHRAUBE (x1)
- ARTIKEL 5 = DISTANZHALTER 21,5mm LÄNGE (S1154) (x1)

SIE BENÖTIGEN FOLGENDES WERKZEUG

- Satz Inbusschlüssel inkl. 4, 5 & 6mm Inbusschlüssel
- Satz Steckschlüssel mit 10; 12 & 13mm Steckschlüsseln

Hinweis für Kits mit O-Gummiringen an den Schrauben – *Diese O-Gummiringen werden nicht für den Einbau benötigt!*

Eine digitale Version dieser Montageanleitung kann auf folgender Seite heruntergeladen werden:
www.rg-racing.com

ALLGEMEINE ANZUGSDREHMOMENT

- M4 SCHRAUBE = 8Nm
- M5 SCHRAUBE = 12Nm
- M6 SCHRAUBE = 15Nm
- M8 SCHRAUBE = 20Nm
- M10 SCHRAUBE = 40Nm



ABBILDUNG 1



ABBILDUNG 2

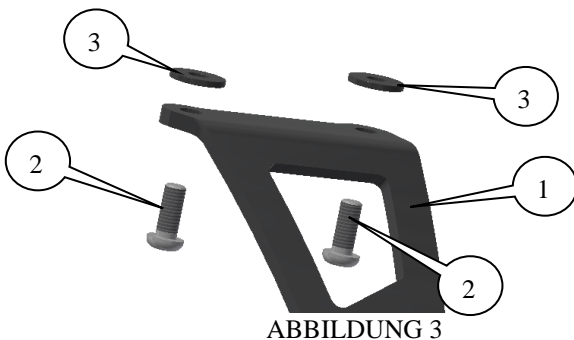


ABBILDUNG 3

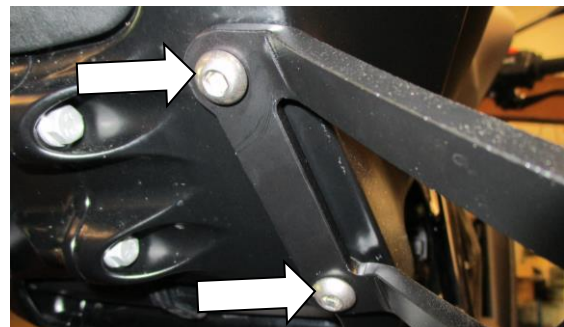


ABBILDUNG 4

R&G

Unit 1, Shelley's Lane, East Worldham, Alton, Hampshire, GU34 3AQ
 Tel: +44 (0)1420 89007 Fax: +44 (0)1420 87301 www.rg-racing.com Email: info@rg-racing.com

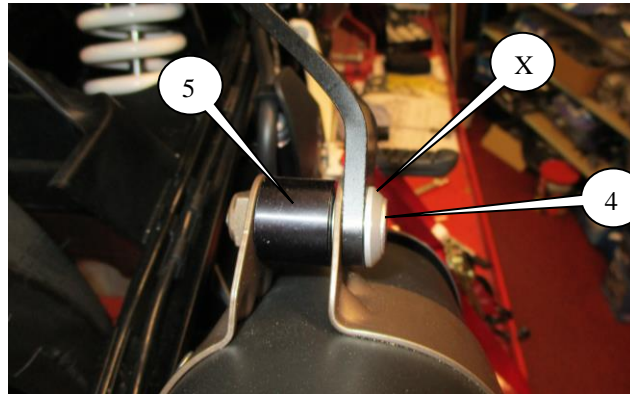


ABBILDUNG 5

MONTAGEANLEITUNG

- Um die R&G Auspuffhalterung montieren zu können, müssen Sie die original Montagehalterung für die Beifahrer-Fußraste entfernen.
- Entfernen Sie daher die zwei Montageschrauben oben an den Montagehalterungen für die Beifahrer-Fußraste – siehe Abbildung 1.
- Entfernen Sie die Montageschraube für den Auspuff (in Abbildungen 2 gekennzeichnet), dann entfernen Sie die original Fußrastenhalterung für den Beifahrer vom Motorrad.
- Führen Sie die zwei M8 Inbusschrauben (Artikel 2) durch die neue Auspuffhalterung (Artikel 1) wie in Abbildung 3 abgebildet, danach die Gummiunterlegscheiben (Artikel 3) an den hervorstehenden Gewinden montieren –siehe Abbildung 3.
- Die Einheit in Position bringen und befestigen – siehe Abbildung 4.
- Die M8 Senkschraube (Artikel 4) durch den original Distanzhalter (mit “X” markiert), dann durch die neue Auspuffhalterung (Artikel 1), dann durch die original Auspuff und neuen Distanzhalter (Artikel5) führen wie in Abbildung 5 abgebildet.
- Überprüfen Sie, dass die Auspuffhalterung ordnungsgemäß montiert ist, bevor Sie alle Schrauben festziehen.
- Bitte achten Sie darauf, dass keine Teile so angebaut werden, dass sie andere Teile des Motorrads beschädigen/berühren können (die ist besonders wichtig, wenn Sie einen Auspuff oder Endtopf aus dem Zubehörmarkt anbauen).

Wichtiger Hinweis: Es obliegt Ihrer Verantwortung sicherzustellen, dass keine Teile der Auspuffhalterung oder Auspuffanlage mit anderen Teilen des Motorrads in Berührung kommen und/oder sie beschädigen. Fahren Sie nicht mit dem Motorrad bis dies sorgfältig überprüft wurde und Sie den hinteren Federweg genau kontrolliert haben (falls zutreffend, Modellabhängig).

AUSGABE 1 13/11/2018 (NSY)

CONSUMER NOTICE

The catalogue description and any exhibition of samples are only broad indications of the Products and R&G may make design changes which do not diminish their performance or visual appeal and supplying them in such state shall conform to the order. The Buyer acknowledges no representation or warranty (other than as to title) has been given or will apply to the Products other than those in R&G's order or confirmation and the Buyer confirms it has chosen the Products as being of merchantable quality and suitable for its particular purposes. Where R&G fits the Products or undertakes other services it shall exercise reasonable skill and care and rectify any fault free of charge unless the workmanship has been disturbed. The Buyer is responsible for ensuring that the warranty on the motorcycle is not affected by the fitting of the Products. On return of any defective Products R&G shall at its option either supply a replacement or refund the purchase money but shall not be liable if the Products have been modified or used or maintained otherwise than in accordance with R&G's or manufacturer's instructions and good engineering practice or if the defect arises from accident or neglect. Other than identified above and subject to R&G not limiting its liability for causing death and personal injury, it shall not be liable for indirect or consequential loss and otherwise its liability shall be limited to the amounts paid by the Buyer for the Products or the fitting or service concerned. These terms do not affect the Buyer's statutory rights.

R&G RACING RETURNS POLICY (NON-FAULTY GOODS)

Returns must be pre-authorized (if not pre-authorized the return will be rejected). Goods may only be returned direct to us if they were purchased direct from us (customer must prove if necessary). Otherwise to be returned to original vendor. Goods must be in re-sellable condition, in the opinion of R&G Racing. All returns are subject to a 25% restocking and handling fee (25% of the gross value exc. P&P – at the prevailing price at time of purchase). The customer must pay any and all carriage charges. No returns of discontinued products, unless within 14 days of purchase. This policy does not affect your statutory rights and does not refer to faulty goods.

R&G

Unit 1, Shelley's Lane, East Worldham, Alton, Hampshire, GU34 3AQ

Tel: +44 (0)1420 89007 Fax: +44 (0)1420 87301 www.rg-racing.com Email: info@rg-racing.com